

LOTS 223-227 FOUR BEDROOM VILLAS

Specification

Living room, dining room and bedrooms

- Walls – painted stucco
- Flooring – wood

Kitchen

- Wall – composite stone and painted stucco
- Flooring – composite stone
- Furniture – laminate and composite stone
- Appliances:
 - Microwave oven
 - Main oven
 - Ceramic hob
 - Extractor fan
 - Refrigerator
 - Dishwasher

Bathrooms

Wc

- Wall – marble and painted stucco
- Flooring – marble
- White ceramic wash basin
- Sanitaryware by GSI

Main en-suite bathroom

- Wall – marble and painted stucco
- Flooring – marble
- White ceramic wash basin
- Sanitaryware by GSI

Bathrooms

- Wall – marble and painted stucco
- Flooring – marble
- White ceramic wash basin
- Sanitaryware by GSI

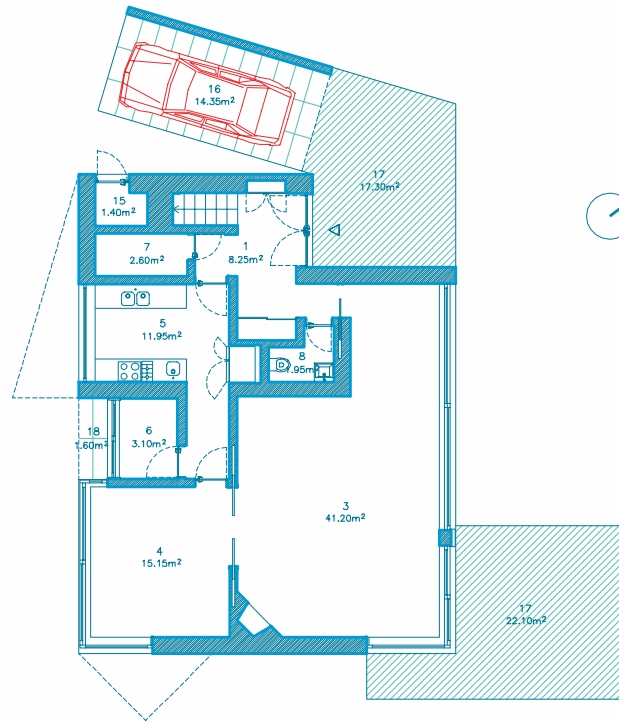
Miscellaneous

- Gas central heating
- Cable TV infrastructure
- Security alarm
- Broadband internet infrastructure
- Pre-installation for air conditioning
- Automatic roof irrigation system
- Fireplace or stove



“All the dwellings on the 17 plots are placed so as to ensure that the lounge faces the lagoon in order to take advantage of the beautiful views that the location offers. The dwellings comprise two levels so as to keep the public and private areas separate.”

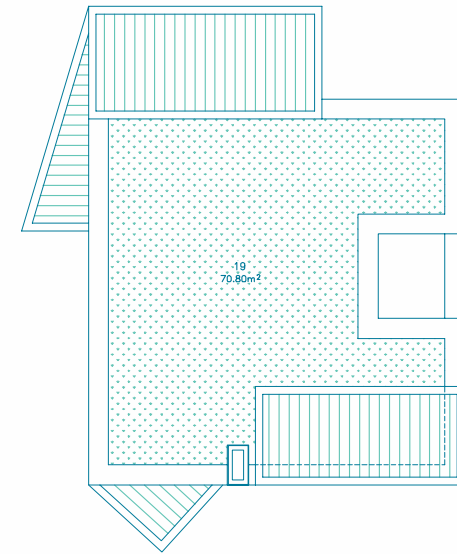
Álvaro Siza Vieira
Architect



PLANTA DO PISO 0



PLANTA DO PISO 1



PLANTA DA COBERTURA



- | | | |
|-------------------|---------------------|--------------------------|
| 1. HALL | 8. WC | 15. STOREROOM |
| 2. HALLWAY/STAIRS | 9. BEDROOM | 16. COVERED PARKING LOTS |
| 3. LIVING ROOM | 10. SUITE | 17. TERRACE |
| 4. DINING ROOM | 11. DRESSING ROOM | 18. COVERED TERRACE |
| 5. KITCHEN | 12. BATHROOM | 19. GARDEN |
| 6. LAUNDRY | 13. BALCONY | |
| 7. PANTRY | 14. COVERED BALCONY | |

