

## LOTS 264-266, 360-363 THREE BEDROOM VILLAS

### Specification

#### Living room, dining room

- Wall – painted stucco
- Flooring – slate

#### Bedrooms

- Wall – painted stucco
- Flooring – slate

#### Kitchen

- Wall – composite stone and painted stucco
- Flooring – slate
- Furniture – birch faced and composite stone
- Appliances:
  - Microwave oven
  - Main oven
  - Ceramic hob
  - Extractor fan
  - Refrigerator
  - Dishwasher

#### Bathrooms

##### Wc

- Wall – painted stucco
- Flooring – slate
- Stone wash basin
- Sanitaryware by GSI

##### Main en-suite bathroom

- Wall – marble and painted stucco
- Flooring – slate
- White ceramic wash basin
- Sanitaryware by GSI

##### Bathroom

- Wall – tile and painted stucco
- Flooring – slate
- White ceramic wash basin
- Sanitaryware by GSI

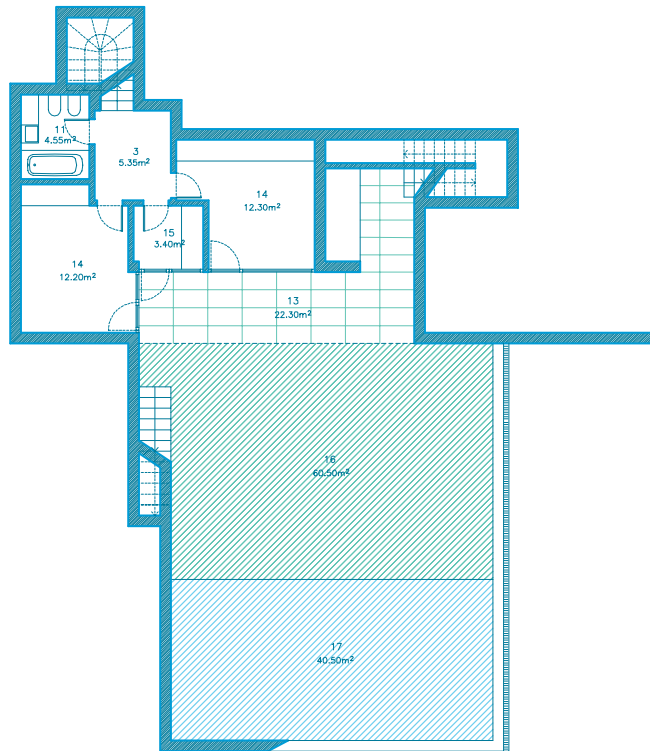
#### Miscellaneous

- Gas central heating
- Cable TV infrastructure
- Security alarm
- Broadband internet infrastructure
- Pre-installation for air conditioning
- Automatic roof irrigation system
- Fireplace or stove

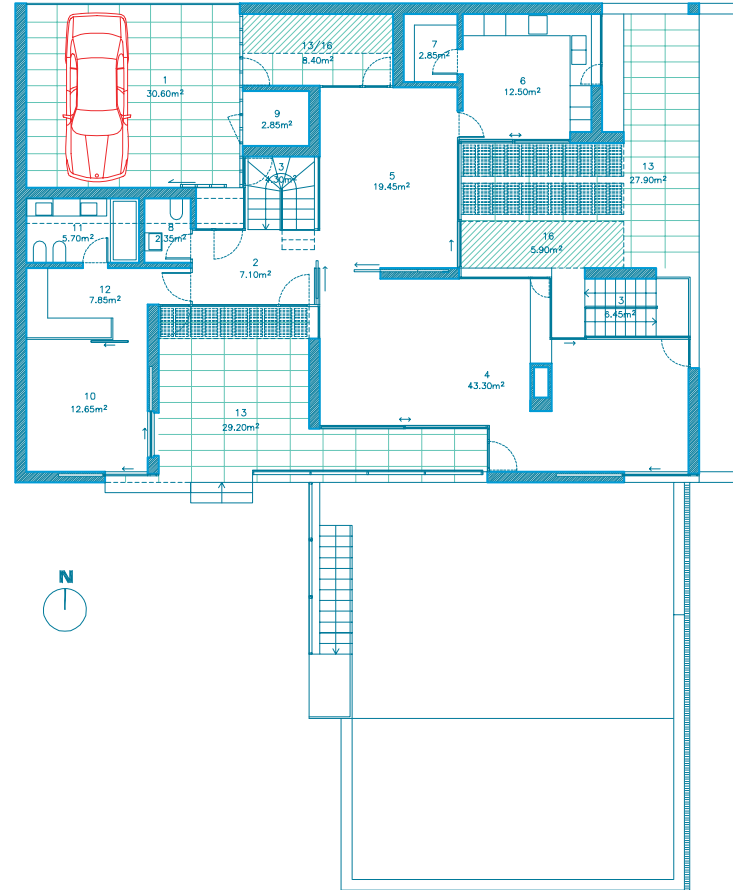


“The relation of the house with the East is considered very important given that it is in this direction that there is a connection with Óbidos lagoon and where the view is oriented in a natural way, constitutes an organised section, interprets and makes sense within the geographical position.”

**Josep Llinás**  
Architect



PLANTA DO PISO -1



PLANTA DO PISO 0

1. COVERED PARKING LOTS
2. HALL
3. HALLWAY/STAIRS
4. LIVING ROOM
5. DINING ROOM
6. KITCHEN
7. PANTRY
8. WC
9. STOREROOM
10. SUITE
11. BATHROOM
12. DRESSING ROOM
13. COVERED TERRACE
14. BEDROOM
15. LAUNDRY
16. TERRACE
17. SWIMMING POOL

