

LOTS 267-272 FOUR BEDROOM VILLAS

Specification

Living room and dining room

- Wall – painted stucco
- Flooring – quartzite

Bedrooms

- Wall – painted stucco
- Flooring – wood

Kitchen

- Wall – composite stone and painted stucco
- Flooring – quartzite
- Furniture – birch faced and composite stone
- Appliances:
 - Microwave oven
 - Main oven
 - Ceramic hob
 - Extractor fan
 - Refrigerator
 - Dishwasher

Bathrooms

Wc

- Wall – terracota tile and painted stucco
- Flooring – quartzite
- Stone wash basin
- Sanitaryware by Catalano

Main en-suite bathroom

- Wall – terracota tile and painted stucco
- Flooring – wood
- White ceramic wash basin
- Sanitaryware by Catalano

Bathroom

- Wall – terracota tile and painted stucco
- Flooring – wood
- White ceramic wash basin
- Sanitaryware by GSI

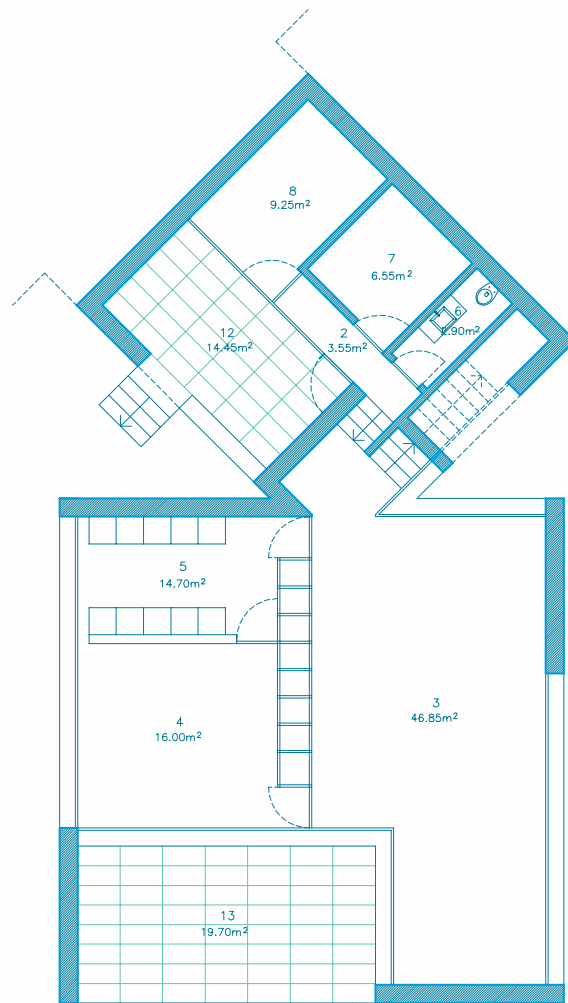
Miscellaneous

- Gas central heating
- Cable TV infrastructure
- Security alarm
- Broadband internet infrastructure
- Pre-installation for air conditioning
- Automatic roof irrigation system
- Fireplace or stove

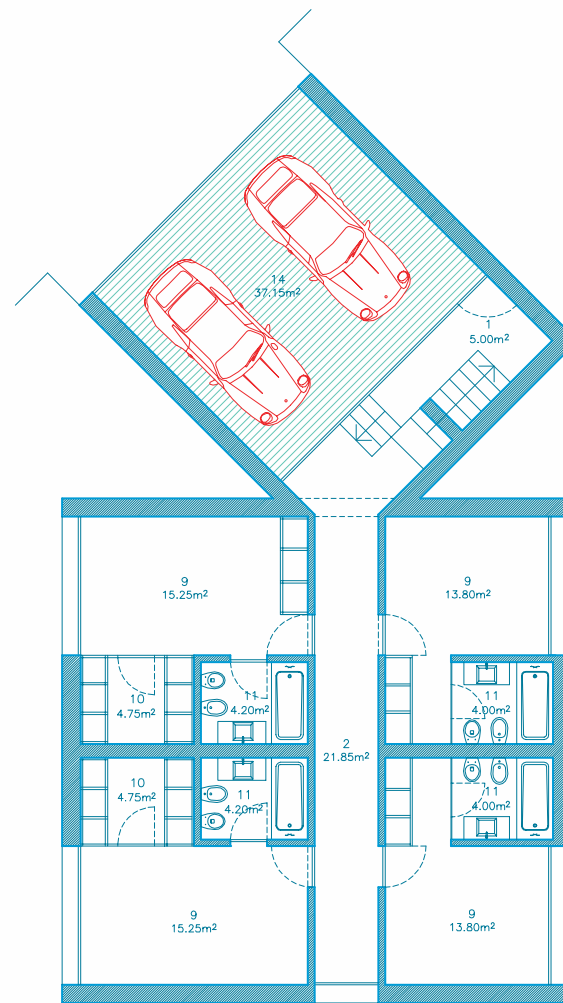


“Each house consists of two linked cubic structures that intersect at 45°, separating the vertical circulation area and garage from the remainder areas of the house . . . the house is built on two levels: the elevation at street level where the structure is lower, out of sight and containing the accesses; and the ground level so to speak where the two house levels anchor on the land and open to the surroundings.”

Gonçalo Byrne
Architect



PLANTA DO PISO -1



PLANTA DO PISO 0

1. HALL
2. HALLWAY/STAIRS
3. LIVING ROOM
4. DINING ROOM
5. KITCHEN
6. WC
7. LAUNDRY
8. STOREROOM
9. SUITE
10. DRESSING ROOM
11. BATHROOM
12. COVERED TERRACE
13. BALCONY
14. PARKING LOTS

