

LOTS 302-305 THREE BEDROOM VILLAS

Specification

Living room, dining room and bedrooms

- Wall – painted stucco
- Flooring – terracotta tile

Kitchen

- Wall – painted stucco
- Flooring – terracotta tile
- Furniture – laminate and composite stone
- Appliances:
 - Microwave oven
 - Main oven
 - Ceramic hob
 - Extractor fan
 - Refrigerator
 - Dishwasher

Bathrooms

Wc

- Wall – terracotta tile and painted stucco
- Flooring – terracotta tile
- Stone wash basin
- Sanitaryware by Catalano

Main en-suite bathroom

- Wall – terracotta tile and painted stucco
- Flooring – terracotta tile
- White ceramic wash basin
- Sanitaryware by Catalano

Bathrooms

- Wall – terracotta tile and painted stucco
- Flooring – terracotta tile
- White ceramic wash basin
- Sanitaryware by Catalano

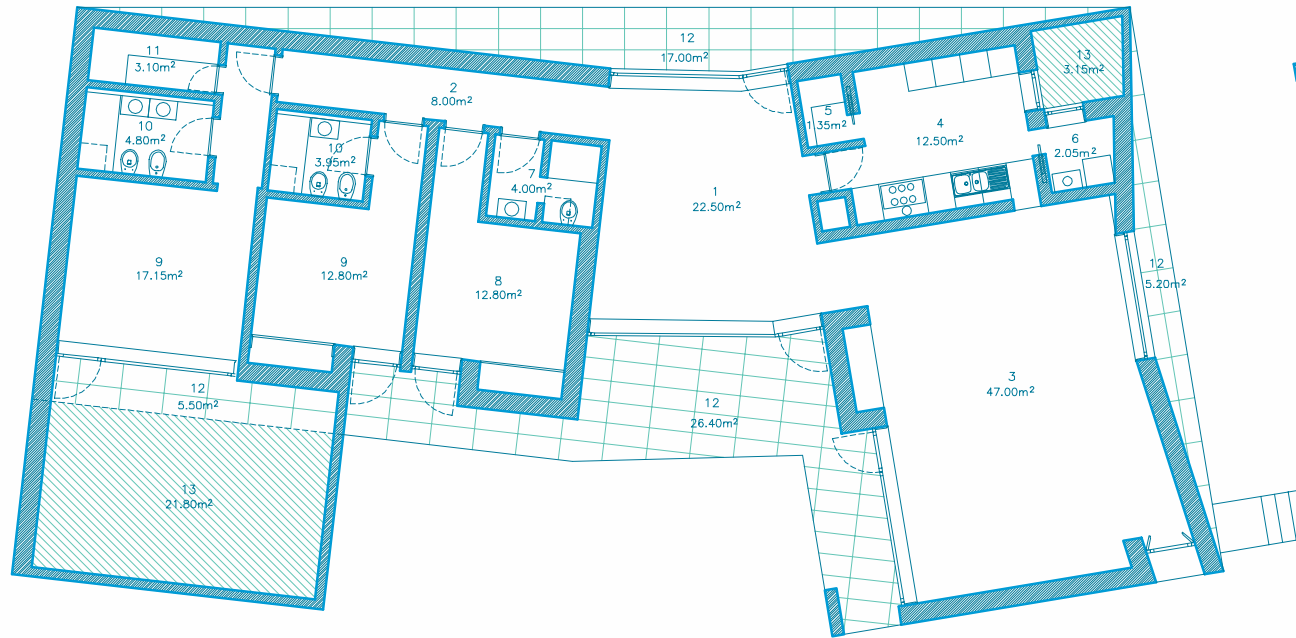
Miscellaneous

- Gas central heating
- Cable TV infrastructure
- Security alarm
- Broadband internet infrastructure
- Pre-installation for air conditioning
- Automatic roof irrigation system
- Fireplace or stove

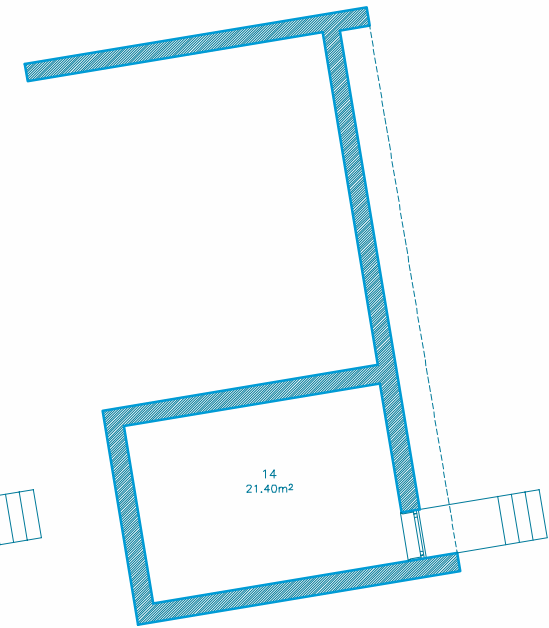


“The main objectives of this project are to: maintain the natural landscape; lowering the houses at West and raising them at the East for enjoyment of the lagoon view; play with the positioning of the houses to obtain maximum privacy and best views; reduce the impact of construction by means of greenery cover; placing the entrance to the North, the only access at the front, to extend them to the South and West in a U shape.”

Luísa Penha
Architect



PLANTA DO PISO 0



PLANTA DO PISO -1



- | | |
|---------------------------|---------------------|
| 1. HALL | 8. BEDROOM |
| 2. HALLWAY | 9. SUITE |
| 3. LIVING AND DINING ROOM | 10. BATHROOM |
| 4. KITCHEN | 11. DRESSING ROOM |
| 5. PANTRY | 12. COVERED TERRACE |
| 6. LAUNDRY | 13. TERRACE |
| 7. WC | 14. STOREROOM |

