

Specification

Living room, dining room and bedrooms

- Wall – painted stucco
- Flooring – hydraulic tile

Kitchen

- Wall – composite stone and painted stucco
- Flooring – hydraulic tile
- Base units – laminate and composite stone
- Appliances:
 - Microwave oven
 - Main oven
 - Ceramic hob
 - Extractor fan
 - Refrigerator
 - Dishwasher

Bathrooms

Wc

- Wall – terracotta tile and painted stucco
- Flooring – hydraulic tile
- Stone wash basin
- Sanitaryware by Catalano

Main en-suite bathroom

- Wall – marble and painted stucco
- Flooring – hydraulic tile
- Stone wash basin
- Sanitaryware by Catalano

Bathrooms

- Wall – terracotta tile and painted stucco
- Flooring – hydraulic tile
- Stone wash basin
- Sanitaryware by Catalano

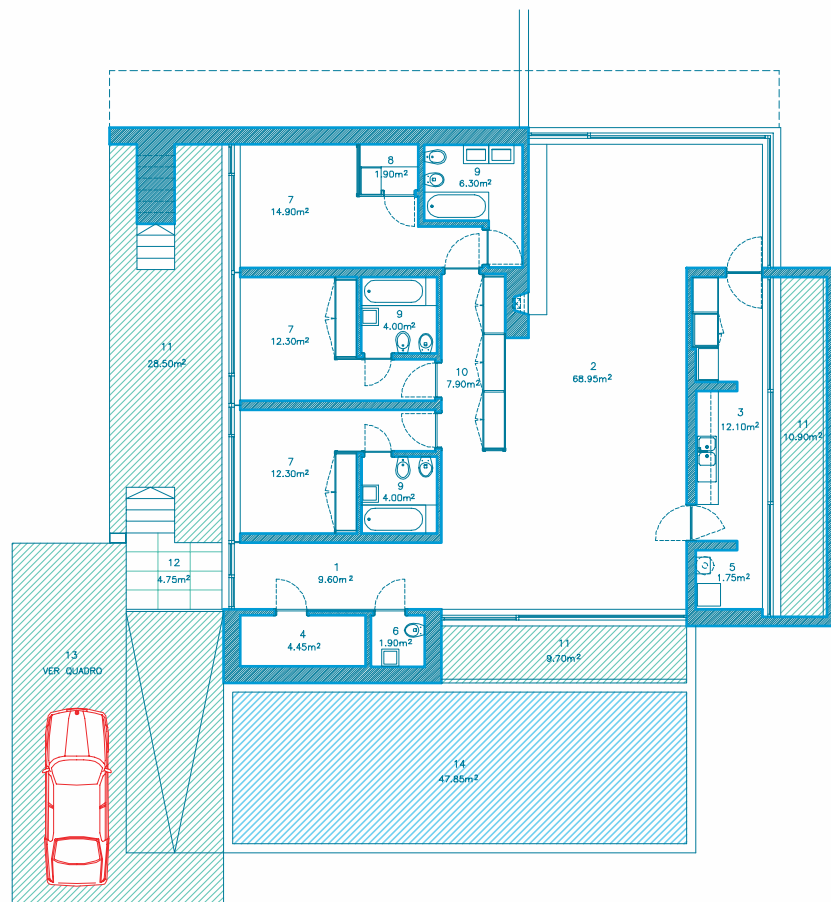
Miscellaneous

- Gas central heating
- Cable TV infrastructure
- Security alarm
- Broadband internet infrastructure
- Pre-installation for air conditioning
- Automatic roof irrigation system
- Fireplace or stove

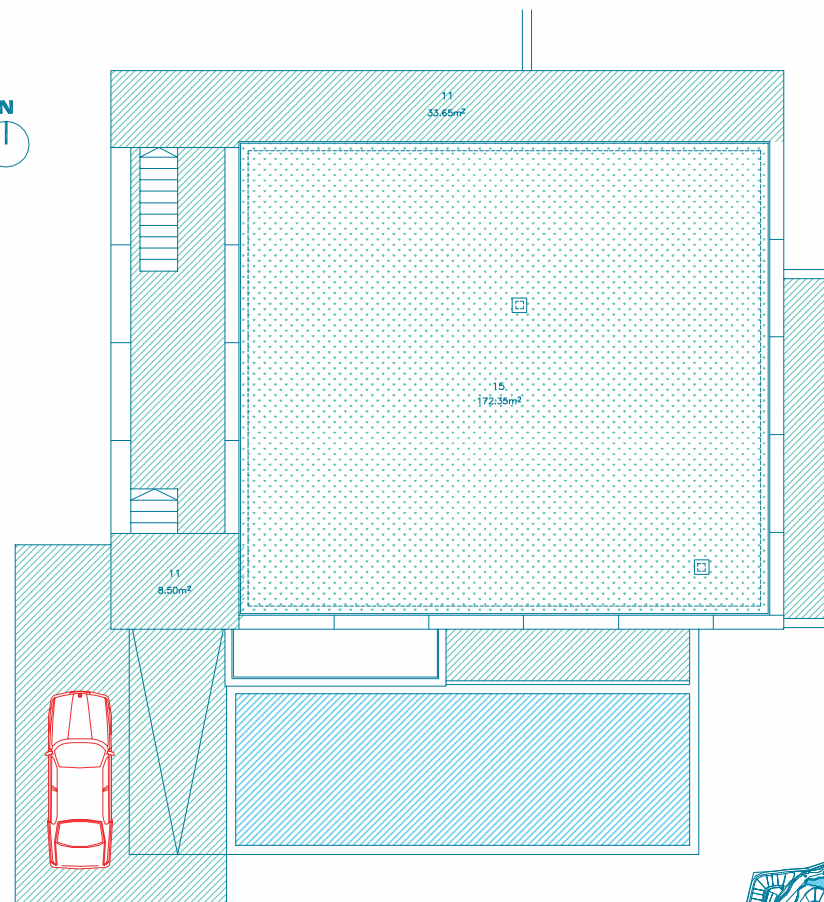


“The typology is arranged in a set of spaces with corresponding distinct functional areas on which is placed a flagstone paved garden area . . . for the cover there is access through the bedrooms courtyard for maintenance and use of the garden.”

Nuno Brandão Costa
Architect



PLANTA DO PISO



PLANTA DA COBERTURA

- | | |
|---------------------------|------------------|
| 1. HALL | 6. WC |
| 2. LIVING AND DINING ROOM | 7. SUITE |
| 3. KITCHEN | 8. DRESSING ROOM |
| 4. STOREROOM | 9. BATHROOM |
| 5. LAUNDRY | 10. HALLWAY |

- | |
|---------------------|
| 11. TERRACE |
| 12. COVERED TERRACE |
| 13. PARKING LOT |
| 14. SWIMMING POOL |
| 15. GARDEN |

